

Ramstein Air Base



Welcome from the General Manager

On behalf of the 786th Force Support Squadron and the Kaiserslautern Military Community Lodging Team, welcome to Germany. We are honored to have you as our guest and we thank you for allowing us to serve you.

Whether you're here on official business or just visiting to enjoy the multitude of destinations throughout the region, our mission is the same: To provide our guests with a "home away from home" atmosphere through excellent service and hospitality.

On the following pages you will find information designed to acquaint you with our facilities, available services, and our house policies. We recommend you take a few moments to familiarize yourself with our operation and if you have any questions, give us the opportunity to answer them.

Our team is dedicated to providing quality service and is always available to assist you. Please feel free to contact us at the front desk if you need any assistance or you have special needs during your stay.

Again, welcome to Europe and to the Kaiserslautern Military Community Lodging. We wish you a pleasant stay and a safe and successful journey.

Ron Wolshlager

RON WOLSHLAGER, NF-IV, CHA
General Manager



High Speed Internet Access

PROVIDED BY MIDATLANTICBROADBAND

WINDOWS 10 Open the Start menu and click on the “Settings” icon.

In the Settings menu, click on “Network & Internet”.

In the left menu, click on “Wi-Fi”.

In the Wi-Fi settings, click on the “Show available Networks” link.

Click on the “midatlanticbb” network and click the “Connect” button.

Wait for a few moments while your computer connects to the wifi network. When the connection is successful, you should see a notification in the bottom-right corner of your screen.

WINDOWS 11 Select the Network icon on the right hand side of the taskbar.

Click on the “midatlanticbb” network and click connect button.

Wait for a few moments while your computer connects to the wifi network. When the connection is successful, you should see a notification in the bottom-right corner of your screen.

MAC OS On your Mac, click on the “Apple” logo in the top-left corner of the screen and select “System Preferences” from the drop-down menu.

In the System Preferences window, click on the “Network” icon.

In the Network window, make sure that the “Wi-Fi” option is selected in the left menu.

Make sure that the “Show Wi-Fi status in menu bar” checkbox is checked. This will allow you to easily access the Wi-Fi settings from the menu bar at the top of the screen.

Click on the “midatlanticbb” network and in the list of available networks.

Wait for a few moments while your Mac connects to the wifi network. When the connection is successful, you should see a checkmark next to the wifi network’s name in the list of available networks.

January 2023



QUESTIONS OR ISSUES? Please contact our MABB help desk at 866-435-7548



High Speed Internet Access

PROVIDED BY MIDATLANTICBROADBAND

ANDROID Open the Settings app on your Android device.

Tap on "Network & Internet".

Tap on "Wi-Fi".

Make sure that the Wi-Fi toggle switch is turned on. Your device will automatically scan for available wifi networks.

Tap on the "midatlanticbb" wireless name.

Wait for a few moments while your device connects to the wifi network. When the connection is successful, you should see a notification in the notification bar at the top of your screen.

IPHONE On your iPhone, open the "Settings" app.

Tap on "Wi-Fi".

Make sure that the Wi-Fi toggle switch is turned on. Your iPhone will automatically scan for available wifi networks.

Tap on the "midatlanticbb" wireless name.

Tap on the "Join" button.

Wait for a few moments while your iPhone connects to the wifi network. When the connection is successful, you should see a checkmark next to the wifi network's name in the list of available networks.

January 2023



QUESTIONS OR ISSUES? Please contact our MABB help desk at 866-435-7548

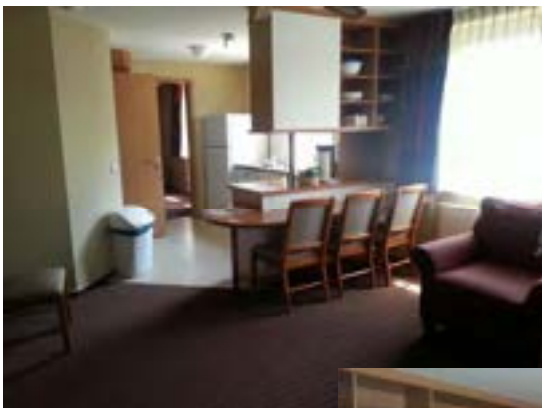


Amenity Replacement

Welcome valued Guest! We have provided you with a few complimentary items to get you through your first night's stay. Feel free to ask any lodging team member if you need any of these items replenished. If you forgot to pack any other toiletry item, please come see us at the front desk. We should have what you need available for purchase.

Air Force Inns Promise

“Our goal is to provide you a clean, comfortable room to guarantee a good night's rest and pleasant stay. If any part of your stay with us is not satisfactory, please provide the lodging manager or front desk staff an opportunity to ‘make it right.’”



Photos: Landstuhl
Lodging Facilities

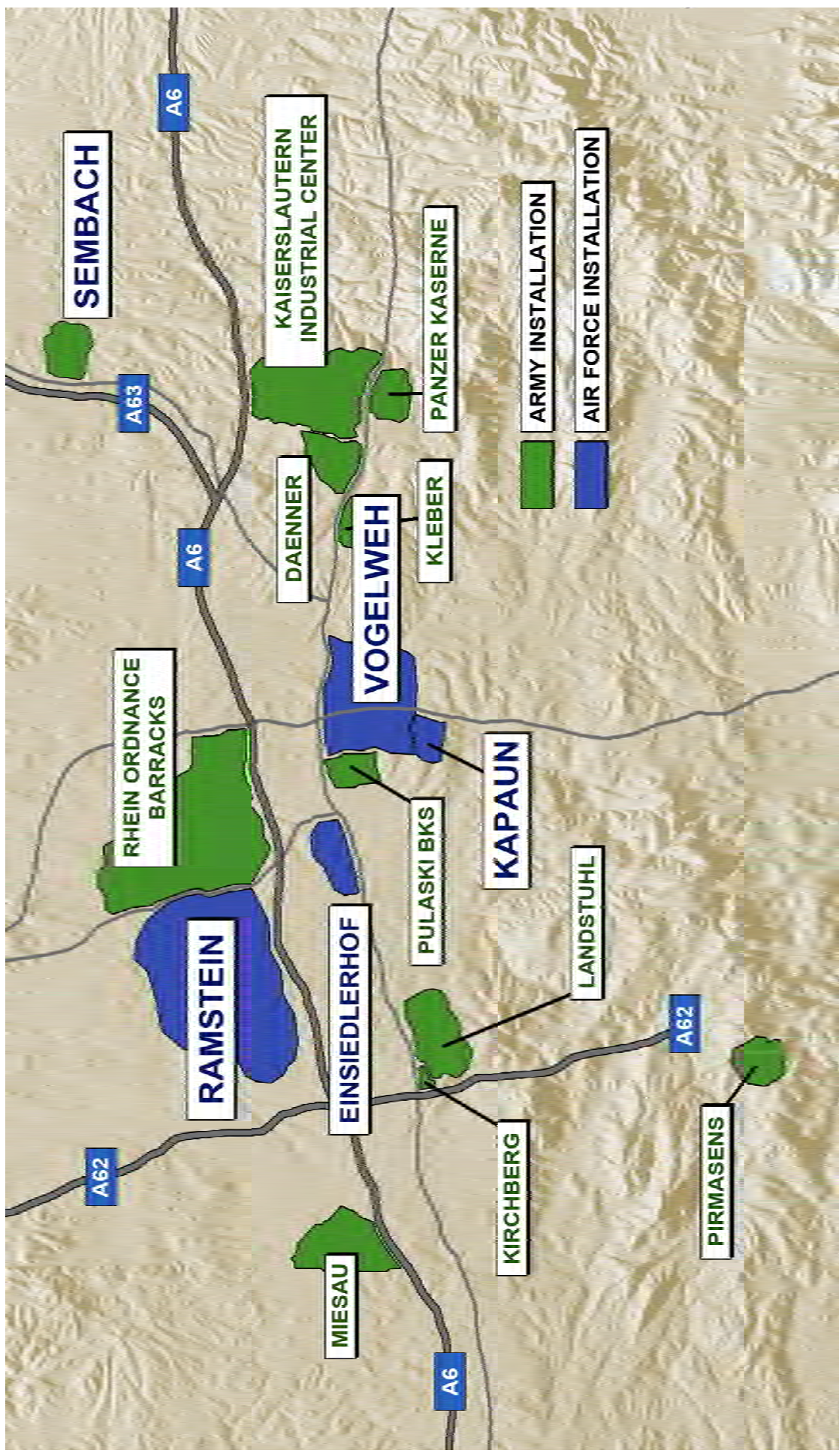


Table of Contents

- **General Information**
 - Local Information
- **Lodging Information**
 - Guest Responsibilities
 - Housekeeping Services
 - Room Rates, Fees, and Sundry Sales
 - Guest Services
 - Pet Policy and Kennel Listing
- **Telephone Information**
 - Telephone Operating Instructions and Rates
 - Useful Phone Numbers
- **Base Facilities**
 - Force Support
 - Other Base Facilities
- **Dining Information**
- **Maps**
- **Area Attractions**
- **TV/Radio Information**
- **Transportation**



Kaiserslautern Military Community



Ramstein Air Base Mission

Ramstein Air Base, Germany, serves as headquarters for U.S. Air Forces in Europe (USAFE) and is also a North Atlantic Treaty Organization (NATO) installation. The host unit at Ramstein is the 86th Airlift Wing whose mission is to provide combat airlift and operate the Air Force's premier installation to enable and assure strategic capabilities.

In addition to USAFE and the NATO Allied Air Component Command Headquarters, also residing on Ramstein is: 3rd Air Force; the 435th Air Ground Operations Wing, USAFE's first wing solely dedicated to supporting battlefield Airmen; the 521st Air Mobility Operations Wing, providing Air Mobility Command's command and control, en route maintenance support, and air transportation services for theater and strategic air mobility missions in Europe and Southwest Asia; and a variety of tenant organizations.



U.S. Air Forces in Europe & Air Forces Africa Mission



As the air component for both U.S. European Command (USEUCOM), and U.S. Africa Command (USAFRICOM), USAFE-AFAFRICA directs air operations in a theater spanning three continents, covering more than 19 million square miles, containing 105 independent states, and possessing more than a quarter of the world's population and more than a quarter of the world's Gross Domestic Product.

During the Cold War, USAFE-AFAFRICA was a fight-in-place fighter force postured for a large-scale conflict. Since the fall of the Berlin Wall, it has transitioned to an Air Expeditionary Force with a mobile and deployable mix of people and resources that can simultaneously operate in multiple locations.

Its role in Europe and Africa has expanded from war fighting to include humanitarian and peacekeeping operations, as well as other non-traditional contingencies throughout its area of responsibility.

In peacetime, USAFE-AFAFRICA trains and equips U.S. Air Force units pledged to the NATO, as well as to partner nations in Africa.



WELCOME INFO FOR KMC

HOUSING

The Housing Office is on Vogelweh in Bldg 1001. DSN: 489-6671 86ces.cehhousingoffice@ramstein.af.mil

The KMC Housing Management Office assists military members and civilian employees collecting LQA, in securing a home on base or on the economy. This service is available to members who are command-

sponsored or have an approved non-availability letter from the dormitories. Accompanied members may choose to live in government-controlled quarters or may live in the community. Unaccompanied Air Force E-3s with less than three years of service and below must report to the Dorm Reception Center, Bldg. 2108. Senior Airmen and above will reside off base.

Unaccompanied Army E-6 and below personnel are required to live in Army Barracks. Please report to Army Unaccompanied Housing located in Bldg 3213 on Kleber Kaserne or contact them at DSN (314) 483-8643.

Housing Allowance

Instead of receiving BAH, while stationed overseas, if you live in the community, you will receive overseas housing allowance. It is adjusted to the dollar's value against the Euro. Rent caps for economy housing are established by rank. A member will either receive his/her rent or his/her rent cap, whichever is the least. You will also receive a monthly Utility allowance that will help pay your utility costs. Another allowance you will receive is the Move-in Housing Allowance. This is a one-time allowance that is received when first renting a house on the economy. It is designed to defray the setup cost of moving into a house to include transformers, curtains or any other items needed to furnish your house. Information on rates and allowances are available at <http://www.defensetravel.dod.mil/>

Temporary Lodging Allowance (TLA) Procedures

TLA is an entitlement to help defray the cost of lodging while seeking permanent housing. TLA is closely monitored and certain criteria must be met to continue to receive TLA. Members will be briefed on their TLA entitlement and their responsibilities at their newcomers briefing. Therefore, it is very important to get your briefing immediately upon arrival. With a reservation, Services generally blocks 30 days for a Temporary Living Facility room. After that it is space-available. But reservation policies are up to Air Force Inns. TLA is authorized for payment while member is "aggressively seeking housing"

- The housing office has authority to approve TLA up to 30 days; up to 60 days requires approval from the 86th Civil Engineer Squadron commander

- TLA extensions will not be allowed when listings are available within a service member's bedroom entitlement, OHA ceiling, etc. Note the bedroom entitlement is less than many people prefer and does not distinguish between apartments, duplexes, stand-alone houses, etc.

- Pet issues and school districts are not justification for TLA extensions beyond 30 days.

Furnishing/Appliances

The Furnishings Management Office (FMO) will provide large appliances (washer, dryer, refrigerator) for you for the length of your tour. Many people end up storing furniture after they arrive or selling their excess items as houses, apartments and rooms themselves are often smaller here than in the United States, so you may have more furniture than you need or have space for. Another feature of German living quarters is the lack of closets. The FMO will issue wardrobes for your use. The number you are authorized depends on the size of your family. If you have a lot of clothes, you might consider purchasing portable wardrobes, under-bed chests, or similar storage units to augment the wardrobes.



WELCOME INFO FOR KMC

OFF-BASE HOUSING

Approximately 11,000 rental units are scattered throughout 300 villages within a 20-mile radius of Ramstein AB and Kaiserslautern. One, two and three bedroom units are available. There are units with four bedrooms and higher, but are somewhat more difficult to find. Many landlords do not allow pets, so ask before making any commitments.

REALTOR SERVICES

Members are discouraged from using local "Immobilien" services (German rental agencies) only because their finder's fees may range from one to three months rent. This is in addition to normal move-in costs. The costs for Immobilien service is at your own expense.

DRIVING IN GERMANY

Driving in Germany can be a delight: the scenery is beautiful and the roads are well maintained. But there are many rules and regulations to observe.

Drivers MUST have a U.S. Army Europe (USAREUR) license to drive in Germany, no exception. An international driver's license is not acceptable, nor can you legally drive a rental car while you wait for your vehicle to arrive without one.

Driving in Germany is a privilege, not a right. All personnel assigned to the KMC who require driving privileges:

- Must take the HQ USAREUR driver's test
- Must have a valid US driver's license (not provisional or restricted)
- Must possess the USAREUR driver's permit while operating a USAREUR plated vehicle
- Must be 17 years old or older
- Must have a debit or credit card for \$20.00 NO CASH

Note: An international driver's license alone is not an acceptable option to operate any USAREUR plated vehicle

Drivers Handbook and Examination Manual for Germany at this link:

<https://media.defense.gov/2010/Nov/16/2001921849/-1/-1/0/AEP190-34.pdf>

POV INSPECTION AND REGISTRATION

The 569th USFPS Vehicle Registration Office, located at Kapaun AS, Bldg 2806, DSN: 489-7729/7542 The registration office has created a pamphlet to answer frequently asked questions about vehicle registration and it is available online at <https://www.ramstein.af.mil/About/Fact-Sheets/Display/Article/303632/vehicle-inspection-registration/>



WELCOME INFO FOR KMC

CUSTOMS, CULTURES, AND LAWS

Building relationships

As a guest in another country, you are expected to be on your best behavior. Service members are unofficial "ambassadors in uniform." Understanding the German laws, customs and courtesies is the first step towards getting along with your



German neighbors and NATO partners. You are here to fulfill an important mission, but you can also enjoy yourself and the cultural experiences of Germany and Europe. Germany has a lot of laws and rules that are sometimes difficult for us to understand, but knowing the reason why makes all the difference. Germany is about the size of Oregon with a population of about 80 million people (1/3 the population of the US). They must have laws in order to live so close together peacefully.

This especially goes for waste disposal. Whether it's bulk waste, recyclable glass, residual waste, paper waste, organic waste or recyclables, "yellow bags," it is important to follow your village's disposal policies. The German-American Community Office is a good place to get that information.

German-American Community Office (GACO)

To help bridge the gap and learn more about your host nation partners, stop by the GACO. Based on a joint initiative by the Kaiserslautern Lord Mayor and the KMC Commander, the office is an international drop-in point for German and American citizens alike. Its competent bilingual staff assists in handling administrative and cultural matters, as well as provides information on host nation policies to include, among others, pet and recycling regulations. Newly arrived military members are provided the full spectrum of information to help them settle quickly in the local area. Fortunately, there are many clubs and private initiatives in the city and throughout the area whose commitments complement this joint effort. For more information, check out the GACO Web site at www.gaco-kl.de.



Airman & Family Readiness Center (A&FRC)

Stop by the A&FRC to find out about several programs geared toward learning more about the local culture. Everything from language classes, to shopping downtown ... they're ready to answer all your questions about living in Germany. Be sure to ask for Cultural Liaison Officer.

GENERAL TIPS ABOUT GERMANY

Quiet Hours

Monday through Saturday from 1 p.m. to 3 p.m. there is a lunchtime quiet hours. In the evening you are not permitted to mow the lawn after 8 p.m. General evening quiet hours begin at 10 p.m. and SUNDAY ALL DAY is mandatory quiet hours (includes lawn mowing, car washing, loud children, stereo or radio (loud)-if it can be heard outside your dwelling or vehicle it is too loud.)

Barbeques

If you live in an apartment building, you cannot grill on the balcony, you must be at least 8 feet away from the building; depending on the direction of the wind, maybe further.

WELCOME INFO FOR KMC

Windows and Stairwells

You must keep your stairwells and windows clean. If you don't have time to clean all your windows, at least clean the ones facing the street.

Garbage and Recycling

Germans are concerned about the environment, so you'll notice a significant difference between trash collection here and back in the States. For one thing, your trash and recycling are collected much less frequently--because you're expected to generate less of it.

In most communities, your refuse is collected once a week--and different materials are collected each time. Your city will provide the refuse containers. For example, your paper may be collected once a month at the beginning of the month, your biodegradables may be collected once in the middle of the month, and your trash may be collected the alternate weeks.

The Housing Office or your landlord can give you specific information about your town's collection schedule and how to sort waste.

You must take glass to special collection centers or back to the store where you bought it. Many communities have receptacles set out for you to sort your glass--clear, brown and green glass go into different containers. You can take hazardous materials, electronic scrap and appliances to one of the military recycling centers at Ramstein, Pulaski or Sembach. Each city has special days for collecting bulk items like furniture and carpets.



Shopping Hours

Hours of shopping are difficult to get used to at first. During the week, the shops stay open until 8 p.m. On Saturdays, they normally close about 4 p.m. Most shops do not open on Sundays. In January and July, the shops normally have an end-of-season sale.

Other Shopping

Flea markets are great fun as are the antique markets. The markets are quite festive and have lots of good food and drink as well as lots of "stuff" to see. They are usually held on the weekends and usually go until 4 p.m. There is a list of flea market dates and places in the Kabel magazine.

Junking

There is also a unique custom in Germany called Sperrmüll--to Americans it means "junking." In most villages, there are two days a year that are dedicated to this custom. Everything that is no longer of use or not wanted and won't fit in the regular trash is put out on the street for pickup (furniture items, etc). However, if someone else wants it, they are free to pick it up and take it with them. This is fun to participate in and just as much fun to watch. Many communities have adopted a policy where you call and get told a specific date for when your Sperrmüll will be picked up. Contact the German American Community Office, 0631- 363-3010 or your individual community administration for more details.

UNDERSTANDING GERMAN CUSTOMS

Greetings

The German people are probably the world's greatest hand shakers. When you are introduced to a German person, you will be expected to shake hands. It is also customary and polite to first introduce and shake the lady's hand. Germans also generally shake hands when they part. A nod of the head and a friendly "Guten Tag" (good day), "Guten Abend" (good evening) or "Auf Wiedersehen" (good bye) usually accompanies the handshake.

WELCOME INFO FOR KMC

Language

Germans will appreciate your efforts to learn their language. There are several sources to learn the German language. And there are many "friendship clubs," universities, and German Volkshochschule (Adult Education Centers) willing to teach you. You can also go to your local library and check out the language tapes, or take a course at the Education Center. When you do try out your German, always use the polite form (Sie) and never the informal (du); children, though, will expect to be addressed with "du." Germans may seem formal because they do not use first names as readily as Americans. The best practice is to use a German's last name until there is a mutual agreement to use the first name; however, this may never occur. If a German has a title, like a doctor or professor, he will probably use it and should be addressed as "Herr Doctor" (Mr. Doctor) or "Herr Professor" (Mr. Professor).

Titles

While older traditions permitted women to use the title of her husband, presently this is now only acceptable if the woman has the title herself, i.e. if the woman is a doctor she may be called "Frau Doctor" (Mrs. Doctor), but if not, she is to be addressed as "Frau" and last name. Women should be addressed as Frau (Mrs), whether she is married or not. In present-day Germany, the word "Fraulein" is banned as it may be perceived diminutive and derogatory by a woman. You will almost never be asked by a woman to address her as "Fraulein."

Timeliness

There are some areas of sensitivity not always understood or appreciated by Americans. Germans are very punctual and may be displeased if you do not arrive in time for an appointment or a social gathering. Arriving 15 minutes late is an American habit that Germans find rude.

Personal Property

Perhaps the most frequent cause of accidental friction is German sensitivity about personal property - cars, homes, gardens, and so on. Leaning against a car or letting children run their hands along the sides of cars may bring an irate German to your side with a firm protest. A good general rule is: if it isn't your property, don't touch it. Be prepared to pay for damages - no matter how minor they seem to you.

Damage to rental housing is another example of German concern for property. The concept of "normal wear and tear" exists in Germany, but is interpreted much more strictly. You are expected to return property in approximately the same condition as you rented it.

STATUS OF FORCES AGREEMENT

The legal status of Americans stationed in Germany is governed by special international agreements including the NATO Status of Forces Agreement. People stationed at overseas bases or posts must remember German laws apply to them, too. To protect yourself, know what rights you have as an American. Whether German authorities exercise their right of jurisdiction depends on the circumstances of the case. German Polizei are empowered to fine you on the spot for lesser traffic offenses not associated with an accident. You must have a U.S. Army Europe certificate and a stateside personal driver's license (or a military or German license) to operate a USAREUR-registered car. Speed limits are often enforced by specially placed cameras, which snap clear pictures of speeding drivers and their vehicles. A few weeks later, you receive a speeding ticket in the mail, often through your unit. U.S. personnel and family members are exclusively subject to trial by German court. In civil actions, German courts have jurisdiction over all parties, regardless of nationality or status. You can sue or be sued in German courts in regard to such matters as breach of a lease or failure to pay debts. German authorities can also directly serve process for civil matters on service members and Department of Defense civilian employees and their family members.



WELCOME INFO FOR KMC



Law enforcement authorities in Germany have the right to require U.S. personnel to identify themselves. You and your family members must carry your military ID card with you at all times.

Some German laws differ from those in the United States. For example, insulting the Federal Republic of Germany, one of its states or its constitutional order is against the law. Germans are very concerned about the environment. Even a small amount of oil lost during an oil change can result in a heavy fine. The best practice is to have oil changes done in a facility specially equipped for the work and capable of recycling or properly disposing of used oil.

Drug abuse is considered a national problem and local laws are enforced vigorously. Even the possession of the smallest amount of illegal drugs can result in prosecution. Stringent requirements for registration and possession of weapons are strictly

enforced to ensure compliance with USAREUR and USAFE weapons regulations.



In addition to many German customs, you will discover many traditions and festivals to participate in. Everyone hears about the Munich "Oktoberfest" - it's held in September, not in October. Here in the Pfalz, wine festivals are the tradition. The annual Bad Dürkheim Wurstmarkt, with its wine and sausage, will give you an opportunity to see German tradition at its best without traveling far from Kaiserslautern. In February, the "Fasching," or carnival season comes to a climax on "Rosenmontag" (Rose Monday), and "Fetter Dienstag" (Fat Tuesday) the two days before Ash Wednesday and the beginning of Lent. The Mainz Parade is one of the best. You can put your costume on and climb aboard the train from Ramstein, Kaiserslautern or any other small town for a reasonable price. You can find celebrations and festivals to visit all year round in Europe. Local recreation centers offer inexpensive transportation and/or

accommodation for all the major festivals. One of the most pleasant social traditions in Germany is "volksmarching:" usually a 10- or 20-kilometer (6.2 or 12.4 miles) walk at your own pace. It's a wonderful opportunity to meet with friends and neighbors, to make new friends, enjoy the scenery and history of Europe, sample new and delicious foods and drink, and participate in some non-strenuous exercise.



WELCOME INFO FOR KMC



If you like walking, but prefer to do it alone, or just with your family and friends, you will find many forest trails in the Pfaelzerwald (Palatinate Forest) very inviting. You could purchase a map from your local bookstore called "Naturpark Pfaelzerwald Mit Markierungen Des Pfaelzerwald Vereins" (The Nature Parks of the Pfalz Forest with Marking from the Clubs of the Area). All the trails are marked with special symbols. When walking through the forest, never abuse trees, flowers or wildlife. Fires, littering and motorized vehicles in forest areas are strictly prohibited. Your stay in Germany will be rewarding, especially if you make an effort to understand the ways of the country and its people.

PET LICENSING AND VETERINARY SERVICES

Upon arrival, pets must be registered with the animal disease prevention and control facility at the Kaiserslautern Veterinary clinic on Pulaski Barracks (Vogelweh Military Complex), Bldg. 2928, DDSN 590-1900 or 06371-9464-1900. At that time you receive a rabies certificate and tags for the pet. Veterinary Services Appointments are required at military veterinary services and emergency care is not available.

Emergencies

Once you are settled, you should find a German vet in case of after-hours emergencies. The military vet clinics have listings of local German vets.

ID: Animals in Germany ~ German law requires that the identification tag be worn on the animal at all times. Rabies certification must be kept current. When not confined, a dog must be on a leash.

Housing: Finding housing with a pet is no more difficult than in the States-some landlords will accept them, some will not. An additional security deposit may be required. Germans love animals and a properly behaved dog on a leash can bring a smile to most. Note the words "properly behaved" and "leash;" again, courtesy and self-discipline are prominent aspects of the society.

Pet insurance: Animals are not allowed to run loose in Germany. Rabies is a problem in Germany, so if you plan to bring your pet, plan for it to live in the house or a fenced yard and only stay outside in a carrier or on a leash. As a pet owner, you are liable for any damage your pet may do-anything from digging up your landlord's flowerbed to causing a car to hit a telephone pole while veering to miss the animal. Most insurance companies offer pet liability insurance at a nominal fee.

Pet Examination Fee: Pet owners arriving at the Ramstein Passenger Terminal are assessed a 55 Euro veterinarian examination fee in accordance with European Union Ordinance #998/2003. The fee is charged per pet. The fee is not reimbursable on travelers orders and is payable by credit card only.

WELCOME INFO FOR KMC

German Words/Phrases for Beginners

English	German	Pronunciation
Yes/No.	Ja/Nein.	ya/niyn
Yes, please/No, thank you.	Ja, bitte/Nein, danke.	ya bitt-e/niyn dang-ke
Please.	Bitte.	bitt-e
Thank you.	Danke.	dang-ke
You're welcome.	Bitte.	bitt-e
Here is/are...	Hier ist/sind...	heer ist/scind...
Hello/Good morning/afternoon.	Hallo/Guten Morgen/Tag.	hal-lo/goot-en mor-gen/tag
Hello/Good evening.	Hallo/Guten Abend.	hal-lo/goot-en ah-bent
Goodbye.	Auf Wiedersehen.	owf vee-der-zay-en
Good night.	Gute Nacht.	goot-e nakht
How are you?	Wie geht es Ihnen?	vee gayt ess een-en
Very well, thanks.	Danke, gut.	dang-ke goot
Excuse me.	Entschuldigen Sie.	ent-shool-dig-en zee
Do you speak English?	Sprechen Sie Englisch?	shpresh-en zee eng-lish
Can you help me?	Können Sie mir behilflich sein?	kuon-en zee meer be-hilf-lish ziyn
I don't understand.	Ich verstehe nicht.	ish fair-shtay-e nisht
I don't know.	Ich weiß nicht.	ish viyss nisht
Please write it down.	Bitte schreiben Sie es auf.	bitt-e shriy-ben zee ess owf
Sorry.	Entschuldigung.	ent-shool-dig-oong
Leave me alone!	Lassen Sie mich in Ruhe!	lass-en zee mish in roo-ah
Where?	Wo?	voe
When?	Wann?	vonn
How?	Wie?	vee
Why?	Warum?	va-room
Who?	Wer?	vair
Which?	Welches?	vel-shes
Where is...?	Wo ist...?	voe ist....
How much?	Wie viel?	vee-feel
How many?	Wie viele?	vee feel-e
What's that?	Was ist das?	vass ist dass
I'd like...	Ich hätte gern...	ish hett-e gairn...
I want...	Ich möchte...	ish moosh-te
I like it.	Es gefällt mir.	ess ge-felt meer
I don't like it.	Es gefällt mir nicht.	ess ge-felt meer nisht
OK/Agreed.	In Ordnung/Einverstanden.	in ord-noong/iyn-fer-shtan-den
That's fine.	Das ist gut.	dass ist goot

Here are some common verb forms you may need:

I want/We want...	Ich will/Wir wollen...	ish vill/veer voll-en
I am/We are....	Ich bin/Wir sind...	ish bin/veer scind
I have/We have...	Ich habe/Wir haben...	ish ha-be/veer ha-ben

GUEST RESPONSIBILITIES

CHECK OUT TIME

Check out time is 1100 hours unless a late check out is approved in advance by management. After 1100, you will be charged for another night. If you have any questions please call the front desk by dialing 0.

GUEST RESPONSIBILITIES

- All guests must be registered at the front desk. Each registered guest is responsible for the conduct of all other room occupants.
- Be considerate of other lodging guests by keeping the noise level down at all times. We often have shift workers and travelers trying to get rest throughout the day.
- Lodging guests are expected to protect the room, furnishings, and other contents from damage. Guests may be charged for occurrences of willful misconduct, theft, or loss of items in the room. Please report all maintenance concerns immediately to the front desk.
- Weapons and ammunition are prohibited. The SFS Armory is available to store weapons.
- Boats, trailers and RVs are not allowed at lodging facilities. Contact Outdoor Recreation for parking of all recreational vehicles.
- Conserve Energy—Turn off television and lights when you are out of the room and unplug all power equipment when not in use.
- Smoking is prohibited in all lodging facilities to include balconies. Designated smoking areas have been established at least 50 feet away from every building. A \$150 cleaning fee will be assessed for violating smoking rules. Once cited, guests who violate this policy are subject to eviction as determined by the lodging manager.
- Ensure personal items are not left on the bed. Housekeepers are not allowed to touch personal items. Housekeepers will not make beds or vacuum/mop floors if personal items are in the way.
- Allow housekeepers access to the room. To ensure the health and safety of our guests, housekeeping will enter all rooms on the 3rd consecutive day a “Do Not Disturb” is posted. IAW AFMAN 34-135 (Air Force Lodging program), Housekeepers must enter Pet-TLFs daily.
- Cooking is only permitted in rooms with kitchens. Use of hot plates, toaster ovens, etc. is strictly prohibited in all other types of Visiting Quarters rooms.
- Candles, incense, and flammable liquids are prohibited in all lodging rooms.
- An additional cleaning fee of at least \$150 will be charged if a room is left excessively dirty. Cleaning of the kitchenette area (refrigerator, stove, all pots, pans, dishes and utensils) must be done by the guest daily and prior to check-out.
- When rearranging furniture, please ensure that furniture is returned to its original position by check-out.

ROOM RATES, FEES, AND SUNDRY SALES

Room Rates

All guests must pay in advance for all room fees. Payment of phone charges will be required at check out. Guests staying for more than 15 days will be charged on the 16th day for all previous miscellaneous charges and in advance for room charges to cover up to the next 15-day period. The current rates per night for each room type are as follows (effective 1 October 2023):

Visiting Officer Quarters	\$161.00
Temporary Lodging Facilities	\$178.00
Distinguished VQs	\$194.00
Large Distinguished VQs	\$194.00



Fees

Smoking in the room	up to \$150.00
Pet in a non-pet room	up to \$150.00
Excessively dirty room	up to \$150.00
Pet Fee (Pet TLFs only)	\$10.00 daily



Fees for damage to the facility, furnishings, or other room contents will be based on replacement or repair costs and may include fees for lost room use during the repair.

FORGOT A TRAVEL ITEM?

If you forgot to pack a standard toiletry item (such as toothpaste, razors, etc.) please come see us at the front desk.

Sundry Sales We should have what you need available for purchase 24/7 at the Guest Reception. We offer a wide selection of snacks, beverages, and breakfast items for sale.

Vending Machines

For your convenience, laundry soap vending machines are stocked by lodging and are located in or near each laundry room.

HOUSEKEEPING SERVICES

Housekeeping service is provided 7 days a week between 0800 and 1530. Service is provided daily unless a “Do No Disturb” sign is displayed.

Housekeeping services include daily stay-over cleaning, extended-stay service, complete check out cleaning and a very thorough deep cleaning of all rooms every six months.

Daily Stay-Over Housekeeping Services:

- Emptying of trash
- Restocking of amenities (coffee supplies daily; soaps are only restocked upon request)
- Cleaning floors and carpets as needed
- Making of beds according to AF Inns standards
- Toilet cleaning
- Bathtubs and showers cleaned
- Bathroom vanities, sinks, and mirrors cleaned
- Towel replacement as needed



Extended-Stay Housekeeping Services (completed weekly in addition to the above):

- Sheets changed and beds made according to AF Inns Standards
- Light dusting as needed
- Furniture polished as needed
- Shower curtain/door cleaned

NOTES: Housekeepers are trained not to touch personal belongings. Please place your belongings in the closet or on the luggage rack so housekeepers may service your room and make the beds. Please feel free to ask your housekeeper for extra linens, blankets,



and amenities. Last call for housekeeping service is normally at 1500. Our housekeeping staff is ready and willing to make your stay here a most memorable one. Please do not hesitate to let your housekeepers know if you need specialized cleaning service. Please be certain to let us know whether the housekeeping staff has met all your needs. Your comfort is our first priority.

GUEST SERVICES



Amenities and Sundries

Air Force Inns provides all guests with several amenities for the first day. If you need any of these items restocked please ask your housekeeper or any reception desk clerk. Additional amenities and sundries are available at the reception desk 24/7.

Business Center

Free Internet access, printing, copying, and DSN fax service are available at the Business Center located by each front desk and available 24 hours a day.

Checkout Time Checkout time is at 1100 hours. Should you require a late check out, please contact the front desk by dialing on the morning of your departure. Late check outs could result in an additional day's room charges.



Dry Cleaners

An AAFES dry cleaner is located in bldg 408 on the Northside of Ramstein AB and in the KMCC across from the Macaroni Grill Restaurant. In Landstuhl, the dry cleaners is in bldg 3774.

Emergencies

In case of emergencies, dial 88-112 from Ramstein lodging phones. At Landstuhl, Vogelweh, and Kapaun dial 88-112. From the Gen Cannon Hotel dial 112.

Extensions

PCS-in and out guests may have up to 30-days on-base lodging when space is available. Extensions past 30 days are made based on availability. Requests should be made through front desk or reservation personnel.

GUEST SERVICES



Fitness

An assortment of cardio equipment is strategically located in some of our lodging buildings to offer guests the opportunity to remain fit during their stay. Each fitness room is supplied with towels and a television with an AFN connection. Please help us ensure a quality room by wiping down your machine when you are finished using it.

Ramstein Bldg 3336, 2nd Floor
General Cannon Hotel, in basement area

Front Desk

With the exception of the General Cannon Hotel and Landstuhl, all our front desks are open 24 hours a day, 7 days a week. The General Cannon Hotel desk is open from 0800-1630 Monday - Friday. The Landstuhl desk is open 0600-2200, 7 days a week.

Ice Machines

Ice machines are located as follows:

- Ramstein Bldg 303 - 2nd floor laundry room
- Ramstein Bldg 304 - 1st floor laundry room
- Ramstein Bldg 306 - 1st floor laundry room
- Ramstein Bldg 310 - 2nd floor hallway
- Ramstein Bldg 538 - 2nd floor laundry room
- Ramstein Bldg 540 - 1st floor laundry room
- Ramstein Bldg 541 - 1st floor laundry room
- Ramstein Bldg 542 - 1st floor laundry room
- Ramstein Bldg 908 - 1st floor laundry room
- Ramstein Bldg 2408 - Basement in laundry room
- Ramstein Bldg 2409 - 2nd floor laundry room
- Ramstein Bldg 3336 - KMCC, each floor in laundry room
- Vogelweh Bldg 1004 - In basement laundry room
- Vogelweh Bldg 1034 - 3rd floor laundry room
- Kapaun Bldg 2778 - 1st floor laundry room
- Kapaun Bldg 2790 - 1st floor laundry room
- Kapaun Bldg 2794 - 1st floor laundry room
- Landstuhl Bldg 3751 - 1st floor hallway
- Landstuhl Bldg 3753 - Lobby
- Landstuhl Bldg 3756 - Basement in laundry room
- Gen Cannon Hotel—just ask the guest reception and they will deliver ice to your room



GUEST SERVICES

Key Cards

If you lost your key card, you can get a replacement key at the front desk. Please show proof of identity to the desk staff. Once replacement keys are issued for lost keys and used in the door lock, the old key cards are automatically voided for your security.



Linen and Towels

Please do not remove linens or towels from your quarters. Protect-our-Planet: Towels on the floor will be exchanged daily; towels left hanging will not be replaced. If you need extra towels or linen changed, please inform your housekeeper or call the front desk by dialing 0 from your room phone. The front desk has additional linens and towels after hours.

Lost and Found

To report or retrieve lost items, please contact the front desk by dialing 0 from your room phone. ID cards and line badges are immediately turned in to the Security Forces. All food items and most toiletry items left behind by guests will be disposed of immediately.

Mailing Address

For your postal needs, please call the Postal Service Center at 480-7857 to set up a General Delivery address for your temporary use. Please do not have mail delivered to lodging. The 786 FSS mailing address may only be used for official mail.

Maintenance

For problems requiring immediate attention, please contact the front desk by dialing 0 from your room phone. For other problems, please fill out the maintenance slip provided in your room and leave it for housekeepers or drop it off with the front desk.



Message Service

Routine messages can be taken through our voicemail system. To check voicemail, follow the directions on your in room telephone instructions.

Newspapers

The Stars and Stripes newspaper is available from a vending machine by the front desk. The weekly base paper "Kaiserslautern American" is placed in every room. The "Kaiserslautern American" is also available at each of our front desk.

GUEST SERVICES

Payments

KMC Lodging guests will pay at check in.

All long term guests must have a Credit Card on file and will be asked to prepay for the entire stay or the first 15 days for longer stays. Payments can be made via check, cash and credit or debit card (AMEX, MC or VISA only).



Personal Property

Personal property should be secured or stowed in closets when you leave the room. Housekeepers are instructed not to pick up or move any occupant's personal property at any time. Leaving items lying around the room or on the bed will result in your room not being properly cleaned and serviced.

Washing Machines and Dryers are centrally located in the following buildings:

Ramstein Bldg 303 - each floor

Ramstein Bldg 304 - each floor

Ramstein Bldg 306 - each floor

Ramstein Bldg 538 - 2nd floor

Ramstein Bldg 540 - 1st floor

Ramstein Bldg 541 - 1st floor

Ramstein Bldg 542 - 1st floor

Ramstein Bldg 908 - each floor, center hallway

Ramstein Bldg 1018, General Cannon Hotel, Main floor near the reception

Ramstein Bldg 2409 - each floor

Ramstein Bldg 3336 - each floor

Vogelweh Bldg 1034 - In basement, 1st, 3rd, & 4th floors

Kapaun Bldg 2778 - 1st floor

Kapaun Bldg 2790 - 1st floor

Kapaun Bldg 2794 - 1st floor

Landstuhl Bldg 3751 - 1st floor

Landstuhl Bldg 3756 - basement



NOTES:

- Detergent and bleach are sold from vending machines in or near each central laundry room and also at the front desk.
- TLFs in Ramstein bldgs 310, 780, 841, 844, 845, 846, 847, 848, & 849 have a washer and dryer in each apartment.

Pet Policy

Pets are only permitted in Pet-Friendly TLFs. Pet owners will be charged a standard \$10 per night fee regardless of the number of pets in the unit and duration of their stay. The fee is used to defray additional cleaning costs and maintenance/replacement of required pet-friendly unit items.

Pet Owner Responsibilities:

Abide by the Pet Agreement signed at check-in. Failure to do so will result in warnings and possible eviction from lodging. Pets must be secured in pet containers when guest is not in the unit. Pets are not allowed to sit directly on furniture or bedding. Owners may not use lodging towels or linens to bathe pets. Ensure pets are leashed when outside the facility. Please ensure "pet relief" area is cleaned up after pet use. Pets are not permitted in or around any other rooms or facilities at any time IAW AFMAN 34-135 (Air Force Lodging Program). A cleaning fee of \$150.00 will be assessed daily for pets found in rooms that are not pet-friendly rooms.

LOCAL BOARDING KENNELS

Sadasa Ranch 0173-810-1163
Am Holzengraben 8, Kaiserslautern

DISTANCE FROM RAMSTEIN AB

22 Km (13.5 miles)

Pet Holiday Kennel 06372-8070
Bahnhofstrasse 80, Bruchmühlbach-Miesau

15 Km (9.5 miles)



Rainbow Farms 06371-12980
Am Harzofen 9b, Landstuhl

5 Km (3 miles)

Katzenhotel Koenig 0631-93451 (Cats only)
Lothringer Dell 48, Kaiserslautern

16 Km (10 miles)



K9 Kennel 06302-6090045
Junkerstrasse 6, Sembach

30 Km (18.5 miles)

Private Pet Boarding 0160 984 40899
Rosenstrasse 12, Linden

20 Km (12.5 miles)

LOCAL VETERINARIANS

Kaiserslautern Army Veterinary Services

DISTANCE FROM RAMSTEIN AB

10 Km (6.2 miles)

Bldg 2928 Pulaski Barracks DSN 590-1900 or 06371-9464-1900.

NOTE: All pets living on post must be registered with Veterinary Services upon arrival. Due to limited manpower and resources, most veterinary emergency cases are best served through a full service civilian veterinary hospital.

Delorme-Goldberg (24 hrs. for emergencies; 0171-9303179)
Daimlerstrasse 7, Landstuhl 06371-914314

9 Km (5.5 miles) from Ramstein AB

Dr. T. Michelberger
Kindsbachstrasse 9, Ramstein 06371-70040

3 Km (1.8 miles) from Ramstein AB

Dr. Moussa Rahimi
Lothringer Dell 48, Kaiserslautern 0631-63063

16 Km (10 miles) from Ramstein AB

Dr. S. Schulz
Saarbrueckerstrasse 85a, Landstuhl 06371-2223

6 Km (3.7 miles) from Ramstein AB

Dr. Schilling Knapp
Kaiserstrasse 60, Landstuhl 06371-3300

6 Km (3.7 miles) from Ramstein AB



The appearance of local business names, addresses, and phone numbers in this publication does not constitute endorsement by the Department of Defense or the Department of the Air Force. All phone numbers are subject to change.

Telephone Information

A full listing of base numbers is available in the yellow section.

“THE FIND-IT GUIDE” (Cover art subject to change)

You will find a copy of “THE FIND-IT GUIDE” on your desk.

A short-list of common telephone numbers follows on the next page.



Commonly Used Phone Numbers

Airman & Family Readiness Center (Family Services).....	480-5100
Cable TV and Internet (TKS).....	0631-3522-499
Chapel	480-6148
Child Development Center	480-6011
Civilian Personnel Office.....	480-5850
Command Post	480-2121
Dental Clinic	479-2210
Dining Facility: Rheinland Inn.....	480-3417
Dry Cleaners.....	0176-259-68469
Education Office.....	480-2032
Family Practice Medical Appointments.....	479-2273
Fisher House	590-7430
Flight Kitchen	480-6059
Furnishings Management Office	489-6153
Housing: (Customer Service).....	489-6671
In/Out Processing	480-6559
Ramstein Tours & Travel.....	480-6330
Legal Office.....	480-5911
Library.....	480-6667
Loan Locker / Airman's Attic	480-5980
Lodging Reservations	480-4920
MPS Customer Service (ID Cards).....	480-6599
Pharmacy Assistance	479-2541
Post Office.....	480-7857
Public Affairs	480-9196
Red Cross	480-2171
Retiree Activities Office.....	480-5486
Security Forces	480-2050
Taxi, Base Transportation (Military—Official Travel ONLY).....	480-5961
TMO (Traffic Management Office)	
Passenger Travel.....	480-5373
Personal Property Office.....	489-7727
Inbound Cargo	489-7727
Outbound Cargo	489-5509
Vehicle Registration.....	489-7542
Visitor Center (Main Gate)	480-2301
Youth Center	480-6444

Telephone Dialing Instructions

Room to Room On Same Base

Dial the Five Digit Extension-2 digit bldg prefix + room number

From Other Base:

To Ramstein — 480-4920

To Vogelweh/Kapaun — 480-4980

To Landstuhl — 480-4970

Building	Prefix	Building	Prefix	Building	Prefix
KMCC	11	303	13	304	14
306	16	310	27	538	28
540	20	541	21	542	22
780	80	841	25	844	24
845	65	846	66	847	67
848	68	849	69	908	17
1004	24	1018	10	1034	21
2409	29	2778	28	2790	27
2794	29	3336	11	3751	21
3753	23	3756	26		

To Receive Calls

From US:

To Ramstein Lodging Switchboard Dial 011-49-6371-47-4920

To Vogelweh/Kapaun Lodging Switchboard Dial 011-49-6371-47-4980

To Landstuhl Lodging Switchboard Dial 011-49-6371-47-4970

Front Desk

Dial 0

Base Operator

Ramstein: 88+480-1110

Vogelweh/Kapaun: 88+489-1110

Landstuhl: 88+486-1110

On Base Calls

88 + On Base Phone Number XXX-XXXX

DSN (Government Official Calls)

DSN within Germany 88-XXX-XXXX

Long Distance DSN-Restricted to Operator Assisted Calls - Please follow instructions for calling the Base Operator; No Charge

Local Calls (Off Base)

99+Number

Between \$.15 & \$.85 per minute (calling cell phones is \$.85 pm)

Direct Dial Long Distance to US

99 + 001 + Area Code + Number

Charge to guest: \$0.40 per minute

Calling Card

99 + German Toll-Free Calling Card Number (begins with 0800)

No Charge (NOTE: Calling US 1-800 numbers from Europe IS NOT TOLL FREE! You will be charged \$.40 per minute!)

International Direct Dial

99 + 011 + Country Code + Number

Charge to guest: varies between \$.40 and \$.85 per minute

To Register/Change/Cancel Automatic Wakeup

Dial 73050 and follow the voice mail prompts

EMERGENCIES

Ramstein, Vogelweh/Kapaun & Landstuhl 88-112

Off Base or Cell Phone —112 or 06371-47-112

Please do not unplug your telephone handset or any of the wireless routers. Thank you!

KMC Force Support Squadron



We have two Force Support Squadrons in the KMC, 86 FSS and 786 FSS. Our mission is to provide World-Class support and quality of life to our customers. Please check us out at www.86FSS.com

Airman & Family Readiness Center, Bldg 2120, Rm 120.....480-5100

The Airman & Family Readiness Center (A&FRC) is here for you, offering a network of services and programs for you and your family. Our mission is to assist you in finding the resources you need, when you need them.

The A&FRC provides services to personnel and their families through workshops, special events and one-on-one consultations. Our core programs include: Personal & Family Readiness, Personal & Work Life, Personal Financial Readiness, Air Force Aid, Employment Assistance, Relocation Assistance, Exceptional Family Member Program-Family Support, Transition - Goals, Plans, Success (GPS), Volunteer Resources, and Information & Referral. The A&FRC staff works closely with commanders, first sergeants, key spouses, installation helping agencies, and others in order to ensure our community's needs are being met.



Aquatics Center, Bldg 422.....478-7665

The Ramstein Aquatic Center has three pools conveniently located inside, which allows for year round swimming. Both the facility and pool temperatures are kept in the 80's, making it seem like summer year round.

This beautiful facility offers a 25 meter fitness pool with lap lanes and a diving board, a wading pool for the little ones, and a recreation pool (which reaches up to 3 feet deep) that has water slides and a playground. We hold numerous programs including Water Aerobics, Fitness Lunch, the Swim Challenge, Red Cross swim lessons for all ages (including private lessons), birthday parties, and more.



KMC Force Support Squadron

Ramstein Bowling Center, Bldg 2139480-0725

The Ramstein Bowling Center is a bowler's paradise. Our knowledgeable, caring professionals are ready to help you with all your bowling needs.

Ramstein Bowling Center features 32 bowling lanes equipped with bumpers for family bowling fun, a full-service pro shop, a slot machine game room, and a full-service snack bar



Child Development Centers

Ramstein Bldg 800480-6011

Vogelweh Bldg 1030489-7419

The Child Development Centers (CDCs) are committed to providing high quality developmental experiences for your children. The two CDC locations are convenient for military members both on Ramstein and Vogelweh.

Both Ramstein and Vogelweh CDCs have earned National Association for the Education of Young Children accreditation, which lets you know that children in our program are getting the best care and early learning experiences as possible. The CDC offers full time and hourly services for children ages six weeks to five years of age.



KMC Force Support Squadron

Civilian Employment Opportunities



Human Resources Office, Bldg 2118480-2672

The Human Resources Office (HRO) is here to help you with all of your Non-Appropriated (NAF) career needs. HRO is constantly hiring to fill positions such as sales clerk, recreation aid, child/youth clerk, and waiter. You can apply online at www.usajobs.gov/ Please call if you have any questions or need help with the website.



Civilian Personnel Office, Bldg 2120, Rm 221.....480-5850

The Civilian Personnel Office (CPO) is here to help you with all of your Appropriated (APF) career needs. CPO is constantly hiring to fill positions in a variety of career fields.

Family Child Care Program, Bldg 849, Rm 312 478-7420

The Family Child Care (FCC) is a great alternative to the CDC for child care. FCC providers are independent business operators and work under their own contracts with the parents of the children they watch. There are FCC providers on Ramstein and Vogelweh as well as several affiliated providers in surrounding villages. The FCC is available for active duty and DoD families and referral lists are available in the office on Ramstein. Parents can expect high standards of care from this home-based program due to the prerequisites that must be met prior to becoming certified. To become licensed, providers must pass background checks and attend rigorous orientation and training classes that include, CPR, first aid, child development, nutrition, detection and prevention of child abuse and AF standards. Providers' homes are inspected for quality care and for safety, fire and public health to ensure their home complies with FCC guidelines.



FCC providers care for children, ages 6 weeks to 12 years, and can only watch 6 children at a time, including their own. They provide extended child care, drop in, hourly and weekend care. Providers are all licensed through the base commander and are re-licensed annually. The FCC is always looking for new providers. If you are interested in a career working in your home and nurturing children, contact the FCC for more information.

Ramstein Northside Fitness Center, Bldg 552480-8085

Ramstein Southside Fitness Center, Bldg 2117.....480-0294

Vogelweh Fitness Center, Bldg 2050489-7329



The Force Support Squadron has three fitness facilities that are available to active duty, retired, dependents and military ID card holders. Ramstein Air Base is home to the Northside and Southside fitness centers. The Vogelweh fitness center is located on Vogelweh Air Base. All three centers offer a variety of cardio equipment, free weights, racquetball courts, fitness classes, individualized fitness assessments (upon request), and active intramural programs in a state-of-the-art, multi-media environment. Both the Northside and Southside centers also offer parent/child workout rooms. Fitness classes include, but are not limited to, Hardcore Circuit, Yoga, Pilates, Spin Classes, and Zumba. For a full schedule of classes, please contact us.



KMC Force Support Squadron

Woodlawn Golf Course, Bldg 553480-6240

Woodlawn is one of the U.S. Air Force's premier golf facilities. Carved out of a forested area on Ramstein Air Base, Germany, it was opened in 1955 as a 9-hole course, designed by renowned golf course architect Walter Machlett. In 1956, Colonel Herb Hartwig, an avid golfer himself, had an additional 9-holes built. Woodlawn is a relatively short course by modern-day standards, measuring only 6044 yds. from the back tees. Woodlawn is a par 70 course with five par 3's, and three par 5's. What Woodlawn lacks in length, it makes up for with narrow tree-lined fairways and fairly well bunkered greens. Woodlawn's signature hole is #8, a 566 yd. par 5 which is guarded by a lake and Woodlawn's largest green. We're proud of Woodlawn's charm and beauty and enjoy the challenges it has to offer. We hope that you will feel the same way. We hope to see you here soon at Ramstein Air Base's Woodlawn golf course.



RTT Travel, Bldg 3336480-6330

RTT Travel is an Air Force owned and operated agency. To use the services of this travel agency you must be a member of the below listed groups and may be required to provide proof of this membership at the time of service. Proof of eligibility will be required before boarding tour busses on Ramstein Air Base.

U.S. Armed Forces, Active Duty Personnel, US Military Retirees, DoDEA Personnel, Government Employees, Family Members & family members of listed groups with active ID cards.



KMC Force Support Squadron



Ramstein Library, Ramstein Bldg 409.....480-6667

The Ramstein Library offers children’s story time and many other interesting activities for the whole family. They also provide library tours and orientations for groups and individuals.

Vogelweh Library, Vogelweh Bldg 2059.....489-7665

The Vogelweh library has high speed Internet on all public computers and WiFi throughout the building. They also offer netbooks, Kindles, and Sony Pocket Edition readers for checkout. The library has 5 iMac computers loaded with video, photo, and audio editing software in their digital media lab.

Community Center, Ramstein, Ramstein Bldg 412480-6600

The Ramstein Community Center is the perfect one stop place for information, fax, long distance phone calls, copier service, special classes, internet services, recreational opportunities and a multitude of other conveniences. Rooms are available for military functions, conferences, private parties or celebrations. Looking for a place to hang out with friends and play pool, table tennis or foosball? Then the Ramstein Community Center is the place for you! Our Center also includes the Flying Pig Restaurant and Pizza Gallerie. Events such as bi-weekly bingo, flea markets, antique and craft bazaars and family nights with bouncy castles keep our Center very busy.

Community Center, Vogelweh Bldg 2059 489-7626

The Vogelweh Community Center provides a variety of activities, services, classes and programs for KMC military members and their families. The center is also home to the Vogelweh Library, MOMS video store, the Vogelweh Teen Center. We are located across from the Vogelweh Bowling Center .

Gear Up Sports Store, Ramstein Bldg 2113480-5226

Our goal is to provide the best quality sports gear available in the market while providing the best value for our customers. Our mission is to keep our combat fit warriors in the right track, dancers in step, and our athletes on the ball. Gear Up is committed to the best youth and adult sporting needs. If we do not have it, we can order it for you.



Arts and Crafts, Ramstein Bldgs 2113478-8394

The Ramstein Arts and Crafts Center is the perfect place to explore your creative side. Our center features a Wood Craft Center, frame shop, craft store, and engraving shop. We also offer a variety of classes for adults and children at all skill levels. Monthly class schedules are available at the center and include ceramics, pottery, cake decorating, scrapbooking, framing, and more.



KMC Force Support Squadron

Outdoor Recreation, Ramstein Bldg 3336..... 480-5705

Our mission is to promote physical fitness and healthy lifestyles by providing the highest quality gear, facilities, and customer driven programming. We meet our mission through our sales store, rental operation, rock climbing facility, and various trips and tours. Our sales store sells a variety of bike equipment, camping gear, fitness apparel, snowboarding and skiing gear. We also offer high quality equipment rentals for the same purposes during the appropriate seasons. In addition, we offer party rentals.



Rod & Gun Club, Vogelweh Bldg 442..... 489-7274

The Rod and Gun Club provides an array of different activities including paintball, archery, skeet/trap shooting and rifle/pistol shooting. Firearms may be rented for use on the shooting ranges. Paintball makes for a great team-building activity. The facility houses a sales store offering paintball equipment, fishing gear, firearms and knives for purchase. There are archery, hunting, fishing and sport shooting courses set up throughout the year. Occasional events are hosted, such as paintball events and shooting tournaments. In Germany, there are specific age requirements for shooting and paintball. Contact the Rod and Gun Club for more information.

Crossroads Community Center Annex, Vogelweh Bldg 2053 489-5494

Crossroads Annex brings Vogelweh tons of great new services. The center of the operation is a full service skate rink for kids, teens and adults of all ages. If you need your coffee fix, stop in at the E' Street Café. Need to get assistance from the Human Resources Office? Stop in and one of the friendly HRO employees will be glad to help you. If you are just looking for a spot to sip your coffee and browse the web, get wired in the Internet Lounge.

Education Center, Ramstein Bldg 2120, Room 421..... 480-2032

The Ramstein Education Center is here to assist you along your educational journey. We have counselors to assist local Air Force members, civilian personnel, and families with their educational needs, as well as four on base, regionally accredited schools (University of Maryland University College, Central Texas College, Embry Riddle Aeronautical University, University of Oklahoma). Our services include but are not limited to tuition assistance, Community College of the Air Force, PME, GI Bill, civilian schooling options, financial aid opportunities, and more.



KMC Force Support Squadron

VAT Office, Ramstein Bldg 2118, Room 136480-5309

The Value Added Tax (VAT) Office is a wonderful way to save up to 19% on purchases made on the local economy. There are two types of VAT forms available for purchase. The NF-I which is for purchases under 2,500€ and the NF-II which is for purchases over 2,500€. To purchase the NF-I form, please bring in your ID and orders if you are here TDY. To purchase the NF-II form, please bring in an 'Angebot' (offer) and a bank certified check made payable to 86th FSS and to the vendor for the net price of the item being acquired.



Utility Tax Avoidance Program (UTAP): US Armed Forces members, military and civilian, fall under the current Status of Forces Agreement (SOFA) with Germany and are entitled to the tax-free delivery of electricity, gas, and/or water, when residing on the German economy. These utilities must be metered in the sponsor's name in order for them to legally receive tax-relief. The utilities are taxed at 19% for electricity and gas, 7% for water. We currently have contracts with over a dozen German utility companies in and around the Kaiserslautern area.

Additional VAT & UTAP services are available at Landstuhl and Pulaski Barracks.

Ramstein Youth Programs, Ramstein Bldg 428.....480-6444

Vogelweh Youth Programs, Vogelweh Bldg 1057489-6504

The Youth Center sponsors many events and offers a wide range of programs for kids and families. We



offer karate, dance, piano classes. In addition, we offer sports such as baseball, softball, flag football, cheer, basketball and soccer. Both Youth Centers have their own gymnasium, which allows for great training and instruction on the balance beam, rings and mats.



Additionally, we offer after school clubs such as cooking, Math Matters and Torch Club, which is a great club for community involvement and leadership. During the winter, spring and summer breaks the Youth Center has great day camps, such as sports, cooking and water and fun day trips. There are several kids nights out and lock-in's, where kids can enjoy games, movies, food and crafts. For more information on the many programs the Youth Center offers you can go to the Youth Center Link.

Ramstein Teen Center, Ramstein Bldg 411480-3099

Vogelweh Teen Center, Vogelweh Bldg 2059 489-6155

The Teen Center is a great place where young adults can be themselves and have a fun time. The Teen Center offers a variety of activities ranging from video games, pool, ping pong, real-2-real, dances and lock-ins. We also have great clubs, such as the Leadership Development Club, Smart Girls and Passport to Manhood. In addition, Ramstein's Teen Center offers a drum line club and Vogelweh has cooking, fine arts and photography clubs. Finally, both Teen Centers have fun, monthly events, including standup comedy and ice cream socials.

KMC Force Support Squadron

Automotive Center, Ramstein Bldg 2477 480-2956

There are three Ramstein Automotive Centers: the Auto Annex, the Auto Hobby Shop and the Auto Recycle Center. Each center is specifically designed to meet your automotive needs.



The Auto Annex (located in building 2136) provides professional mechanical diagnoses and repairs, performed by our Automotive Service Excellence certified mechanics.



The Auto Hobby Shop (located in building 2477) offers self-help bays and lifts, a car wash, and coin-operated vacuums.

The Auto Recycle Center (located in building 5122 - just outside the east gate) offers vehicle disposal and parts pulling, along with a towing service.



CHAPEL SERVICES



RAMSTEIN AIR BASE CHAPEL



IMPORTANT PHONE NUMBERS:



North Chapel - (DSN) 480-6148
Bldg 1201 (Civ) 06371-47-6148



South Chapel - (DSN) 480-5753
Bldg 2403 (Civ) 06371-47-5753



Vogelweh Chapel - (DSN) 489-6859
Bldg 2063 (Civ) 0631-536-6859

CLUB 7 - (Airmen Ministry Center) - (DSN) 478-4353
Bldg 2410 (Civ) 06371-405-4353



Landstuhl Chapel - (DSN) 486-8399

Bldg 3773 (Civ) 06371-86-8399



Pulaski Barracks Chaplain - (DSN) 493-4098

Bldg 2919 (Civ) 0631-3406-4098



Other Base Services

Banking Service and ATM Locations

Community Bank Bldg 3336 480-6538
ATM Locations:
Ramstein KMCC Mall, Bldg 3336
Ramstein Enlisted Club, Bldg 2140
Ramstein Officers Club, Bldg 302
Ramstein Commissary, Bldg 1200
Ramstein South, Bldg 2163
Ramstein Post Office, Bldg 426
Vogelweh Commissary, Bldg 2030
Vogelweh Armstrong Club, Bldg 1036
Kapaun Post Office, Bldg 2763
Landstuhl Medical Center, Bldg 3774
Landstuhl Community Club, Bldg 3780
Landstuhl Gas Station, Bldg 3718
Landstuhl, near Lodging, Bldg 3752
Rhine Ordnance Barracks, Bldg 163

Service Credit Union Bldg 3336 06371-613690
ATM Locations:
Ramstein KMCC Mall, Bldg 3336
Ramstein Passenger Terminal, Bldg 3333
Ramstein Branch, Bldg 2410
Ramstein Commissary Drive-up ATM, Bldg 1134
Vogelweh Commissary, Bldg 2030
Kapaun Service Point Branch, Bldg 2762
Landstuhl Medical Center, Bldg 3775

Laundry/Dry Cleaning Services

Ramstein Dry Cleaners, Bldgs 408 / 3336.....0151-290-55735 / 0176-259-68469
Ramstein Laundromat, Bldg 2163
Vogelweh Laundromat, Bldg 2044
Landstuhl Dry Cleaners, Bldg 3774.....06371-18813

Barber Shop/Beauty Shop

Ramstein Barber Shop (KMCC Mall) Bldg 3336..... 06371-9520205
Ramstein Southside Barber, Bldg 2162 480-5673
Ramstein C&H Cuts & Hairstyles (Siggis), Bldg 2113. 480-5638
Ramstein Beauty Shop, Bldg 3336 06371-42408
Ramstein "The Spa", Bldg 3336..... 06371-406262
Landstuhl Hospital Barber Shop, Bldg 3776 486-7289
Kapaun Barber Shop, Bldg 2779..... 484-6081
Vogelweh Family Hair Care, Bldg 2779 489-6081

On Base Dining

Rheinland Inn Dining Facility, Ramstein Bldg 2107

480-3417

Welcome to the Rheinland Inn DFAC! We provide you with nutritious, quality meals four times a day. Our professionally trained staff prepares a wide variety of delicious menu items in accordance with strict, health and nutritional standards. Our facility features a full complement of dining choices, including a full service main line, snack line and sandwich bar. We also offer



a salad bar, soup, and Grab-N-Go service to meet your daily needs. For a pleasant dining atmosphere, enjoy your meal in one of our two themed dining rooms.

In addition to our regular meals, we also offer a variety of different specialty meals, including, Mongolian, customer appreciation, holiday, and ethnic Meals. Our special meals are served on Thanksgiving, Christmas, and other holidays - even your birthday!

We offer a quarterly birthday meal, complete with a cake. If your birthday lies within the three month period, you're invited to stop by and celebrate with us! Hope to See You Soon!



Lindberg Hof Dining Facility, Kapaun Bldg 2791.....489-6580



The Lindberg Hof dining facility provides healthy and delicious meals with outstanding service. In addition, the facility holds many special events throughout the year, such as customer appreciation meals and deployed spouse dinners. The Lindberg offers a choice of take-out foods through their Grab & Go Service as well as dine-in seating during peak meal times for all airmen. They also have special food theme days occurring each

week ranging from Mexican to Southern, German, and Italian. The Lindberg Hof dining facility is located on Kapaun Air Station and is convenient for those attending the NCO Academy or for those stationed on Kapaun or Vogelweh.

See www.86FSS.com for current menus, hours of operation, special events, eligible patrons, & more!



On Base Dining

Jawbone Flight Kitchen, **Ramstein Bldg 3332**.....480-6059

Welcome to the Jawbone Flight kitchen! We support the busiest Fleet Service in USAFE! The Jawbone Flight kitchen is open 24 hours a day, 7 days a week. We provide nutritious, appetizing box meals to passengers and crew of Air Force aircraft and other authorized patrons. Please stop by and visit us!

The Jawbone is located at building 3332 next to the Passenger Terminal on Ramstein AB. See www.86FSS.com for current menus, hours of operation, special events, eligible patrons, & more!



Ramstein Enlisted Club, **Ramstein Bldg 2140**.....480-2333

The Ramstein Enlisted Club has a wide range of dining and entertainment options from morning to night. Start the day off right with a great cup of coffee, awesome service, and a smile at E' Street Café! For lunch and dinner, we invite you to dine at Chili's or Macaroni Grill Looking for a great p



to watch the game? Hours of operation, menus and more can be found at www.86FSS.com



NOTE: Romano's Macaroni Grill is located in the KMCC Mall, Bldg. 3336.

On Base Dining

Ramstein Officers' Club, Ramstein Bldg 302.....480-2824

The Officers' Club is more than a Club. It is a multi-facility dining and entertainment complex. The Officers' Club facility and its professional catering staff are ready and available for your special function. In addition to offering our facility for special functions, the Club is home to several daily dining options. Enjoy our Daily Lunch Buffet every weekday in the Rheinland Pfalz Room, and La Casa Dolce inside the Club complex. You can also kick back during Cocktail Hour on Fridays at the Wings Lounge once the duty day is done. The Officers' Club complex also features a gaming room.



Open Frame Snack Bar, Ramstein Bldg 2139.....06371-802-0400

Our snack bar is a great place to eat even when you are not bowling. Our snack bar features hot grilled classics, such as our delicious, hand-packed burgers and chicken strips. The snack bar also offers an adult beverage menu.



SUBWAY®, Vogelweh Bowling Center, Bldg 2060..... 489-6543



SUBWAY® is the undisputed leader in fast, healthy food. Our easy-to-prepare sandwiches are made to order right in front of the customer, precisely the way they want - using freshly baked breads, select sauces and a variety of delicious toppings. See www.86FSS.com for current menus, hours of operation, special events, & more!

On Base Dining

Woodlawn Grill, Ramstein Bldg 553.....478-5475

If you are like most golfers, you like to lounge a bit after your round of golf. With something good to eat in front of you and something cool to drink in your hand, there is no better way to wrap-up your day at the Woodlawn Grill. We offer quick grill items such as Gourmet Burgers, Chicken Breast Sandwich, and Chef Salads.

At the Woodlawn Grill, we do our best to make you comfortable. We invite you to enjoy our friendly atmosphere and naturally beautiful surroundings. A great place to unwind or study for an exam. See www.86FSS.com for current menus, hours of operation, special events, & more!



Community Center, Ramstein Bldg 412.....480-6760

The Pizza Gallerie: We are very proud of our Pizzeria restaurant. We make our own dough fresh daily for all our products. We offer daily lunch All-U-Can-Eat Pizza Buffet. Thinking of having a birthday party? A going away ceremony? A lunchtime meeting? We would be happy to help you with your event. Don't hesitate to call



our friendly staff to help you with arrangements. We are committed to providing you with the best possible customer service! See www.86FSS.com for current menus, hours of operation, & more!

On Base Dining

RAMSTEIN



Food Court in the KMCC, Ramstein Bldg 3336, 06371-4079803, BUN-D Healthy Food Choices / Five Guys (Bldg T-1135) / Spudz Baked Potatoes Charlie's Grilled Subs / Panda Express / Subway Taco Bell / Starbucks / Popeyes / Baskin Robbins. Other food facilities in the KMCC mall are Barbarossa German Bakery, Dunkin' Donuts, Heroes Bar & Grill, and the Ramsteiner Hofbräuhaus.



On Base Dining

BritCafe, Ramstein Bldg 539.....06371-40-1441

A little piece of home for all the Brits here in Germany! Call for operating hours.



Canadian Club, Ramstein Bldg 2487.....06371-952161

Call for operating hours.

Deutsche Kantine, Ramstein Bldg 2400.....06371-58941

The German Kantine is a place for local workers to eat traditional cuisine in a comfortable atmosphere, but all others are welcome to dine there too. They offer two hearty breakfast and lunch menus and specials every day at very reasonable prices. Open weekdays from 0630 through 1700.



On Base Dining

VOGELWEH

Burger King, **Vogelweh Bldg 2048**



0631-54956



Armstrong Club, Vogelweh Bldg 1036 0631-3406-3993

Serving lunch and dinner 6 nights a week (closed Sunday). Whether you're in the mood for a cold drink at the Irish pub, or looking for a venue to host your next big function, Armstrong's Club is the best location in Kaiserslautern to do it! Host an event off-site and let us do the work! Rent a room for: personal events, military functions, weddings, banquets, birthdays, buffets, and more.



Vogelweh Commissary, Vogelweh Bldg 2030 489-6828

Your commissary has a bakery, deli, fresh sandwiches to go, a hot foods department, party cakes, rotisserie chicken, a salad bar, and much more! The Defense Commissary Agency operates a worldwide chain of commissaries providing groceries to military personnel, retirees and their families in a safe and secure shopping environment. Authorized patrons purchase items at cost plus a 5-percent surcharge, which covers the costs of building new commissaries and modernizing existing ones.



LANDSTUHL



Burger King, Subway, and Dunkin' Donuts, **Landstuhl Bldg 3774** 06371-2764



Halftime Sports Bar & Wings, Landstuhl Bldg 3780 486-7244

Halftime Sports Bar & Wings offering delicious eat-in dining and a bar/lounge, conference and room rental space with catering options, free WiFi, gaming room and an ATM.

On Base Dining

Landstuhl Hospital Dining Facility, [Landstuhl Bldg 3775](#)486-7144

Located near the Heaton Auditorium. The Nutrition Care Division's goal is to provide information and resources on food and nutrition with evidence-based research and studies. They promote healthy eating habits and lifestyles that contribute to health maintenance and disease prevention. The dining facility accepts cash and credit cards. There are two ATMs available near the dining facility entrance. The Kirchberg Room is also available for rent for unit functions.



Off Base Dining

Information on Off-Base restaurants can be found in *THE FIND-IT GUIDE* which is available in your room. Just flip to the yellow section to find KMC area cuisine. Your *Kaiserslautern American* Newspaper is another good source to find advertisements on a wide variety of local restaurants.

(Find-It Guide Cover Artwork subject to change.)

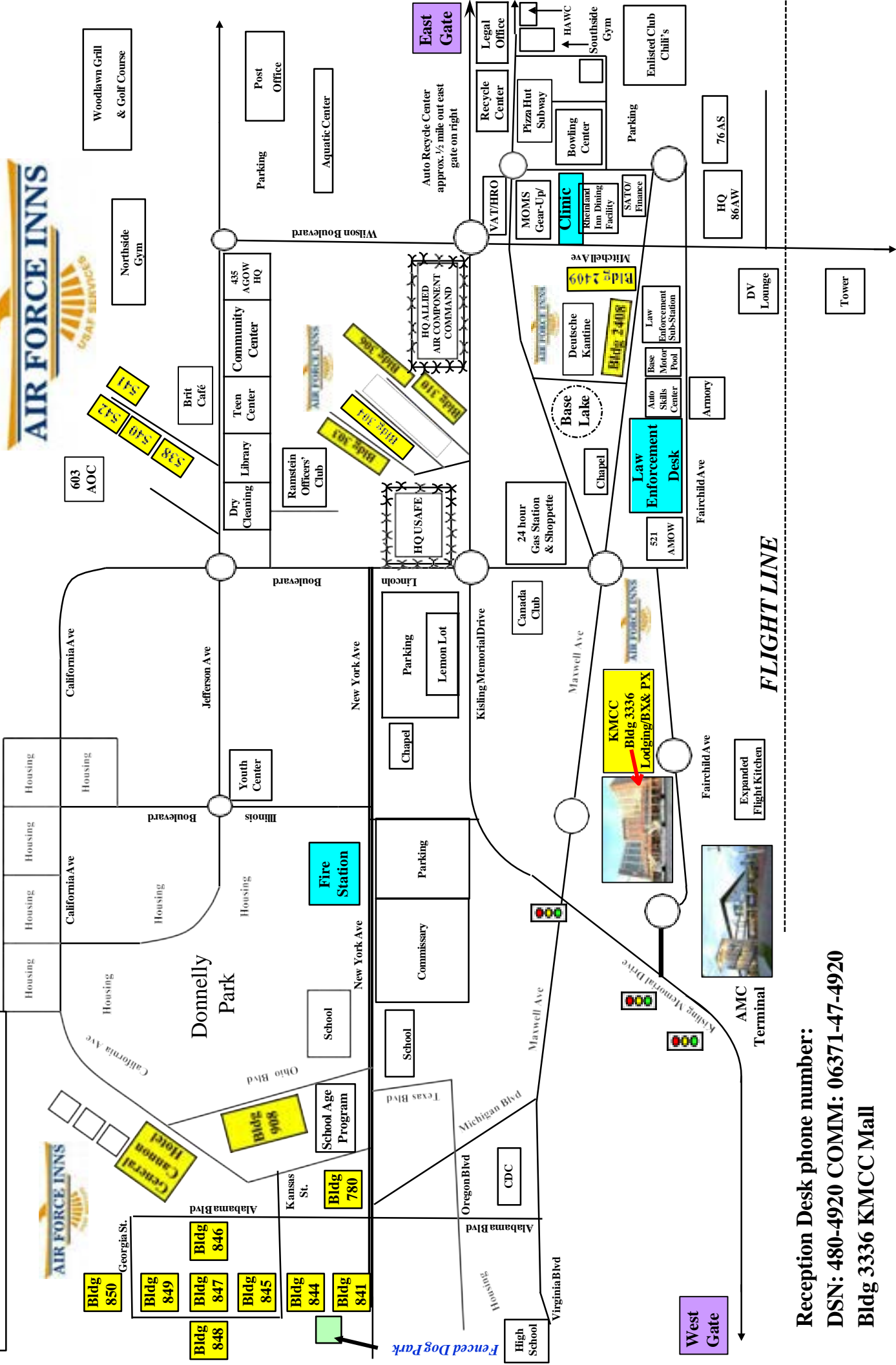


Ramstein Air Base Lodging



LEGEND

Yellow = AF Inns Facilities
 Blue = Emergency Services



Reception Desk phone number:
 DSN: 480-4920 COMM: 06371-47-4920
 Bldg 3336 KMCC Mall

LANDSTUHL LODGING MAP



- LEGEND:**
- B BUS STOP
 - P PARKING
 - CONTAINER UNITS



AF Inns Facilities
Bldgs 3751, 3753, & 3756

Gate # 3
CAR ENTRANCE
CAR EXIT

Gate # 4
ENTRANCE
CAR EXIT

Gate # 2
PEDESTRIANS
CHECK IN BOOTH

Gate # 1
PEDESTRIANS

Reception Desk

To Landstuhl & Bann

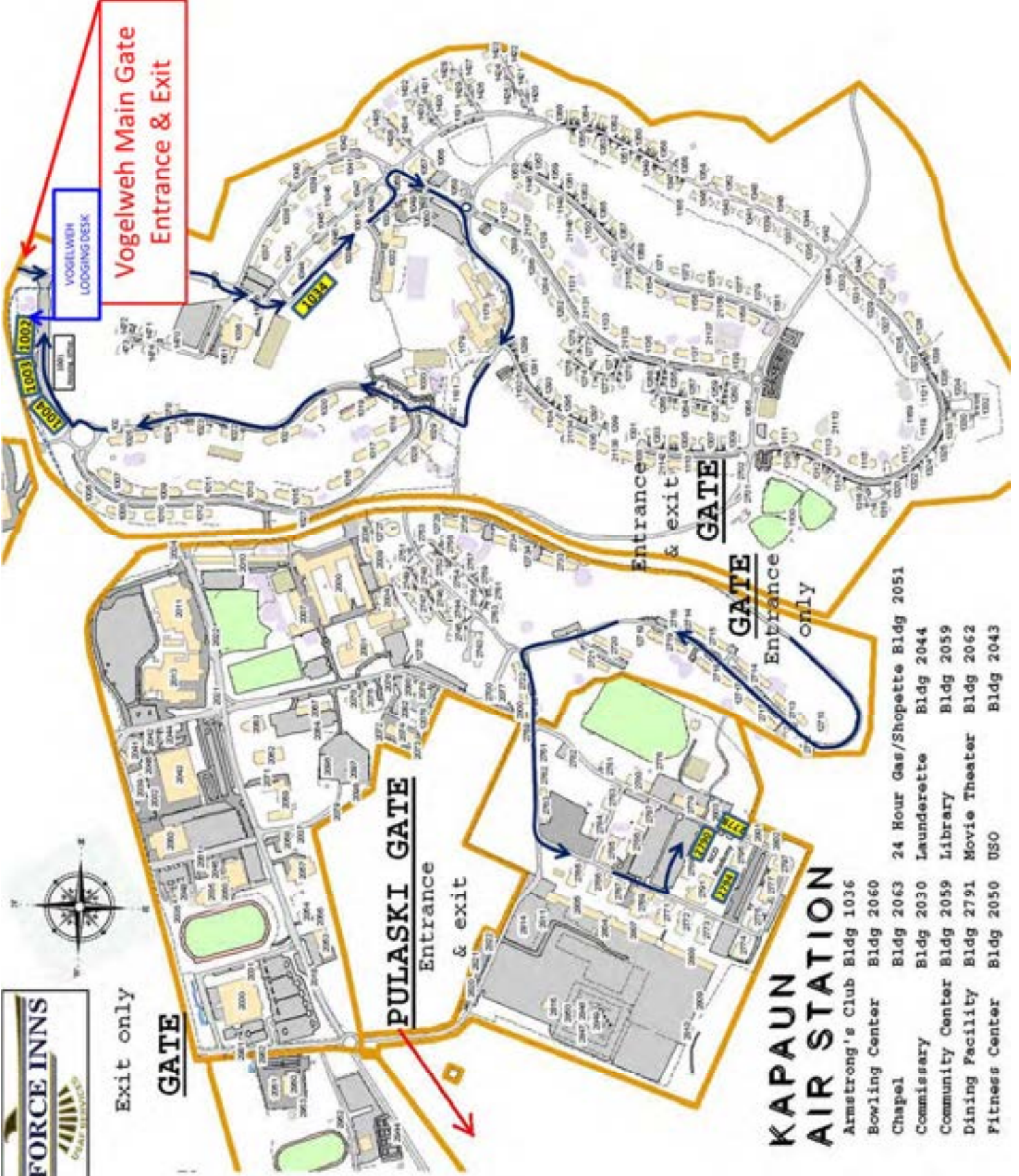
TO ZWEIFBRUECKEN,
MARTINSHOEHE,
RAMSTEIN,
AUTOBAHN A8,
TRIER A62

TO LANDSTUHL &
RAMSTEIN,
KAISERSLAUTERN B40 &
AUTOBAHN A8



Exit only

GATE



**Vogelweh Main Gate
Entrance & Exit**

VOGELWEH
LODGING DESK

PULASKI GATE
Entrance
& exit

Entrance
& exit
GATE

GATE
Entrance
only

**KAPAUN
AIR STATION**

- Armstrong's Club Bldg 1036
- Bowling Center Bldg 2060
- Chapel Bldg 2063 24 Hour Gas/Shopette Bldg 2051
- Commissary Bldg 2030 Laundrette Bldg 2044
- Community Center Bldg 2059 Library Bldg 2059
- Dining Facility Bldg 2791 Movie Theater Bldg 2062
- Fitness Center Bldg 2050 USO Bldg 2043

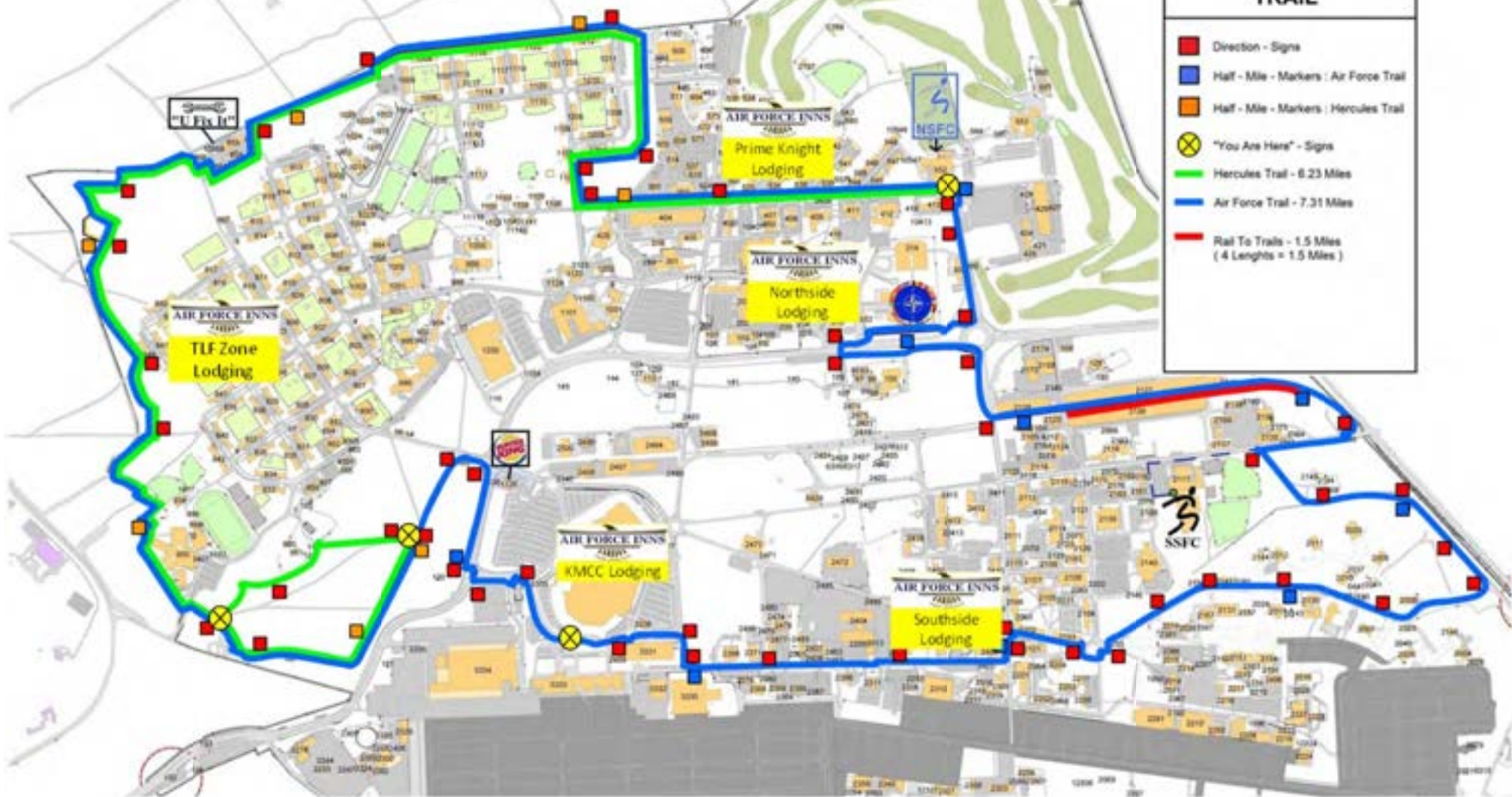
VOGELWEH & KAPAUN LODGING MAP

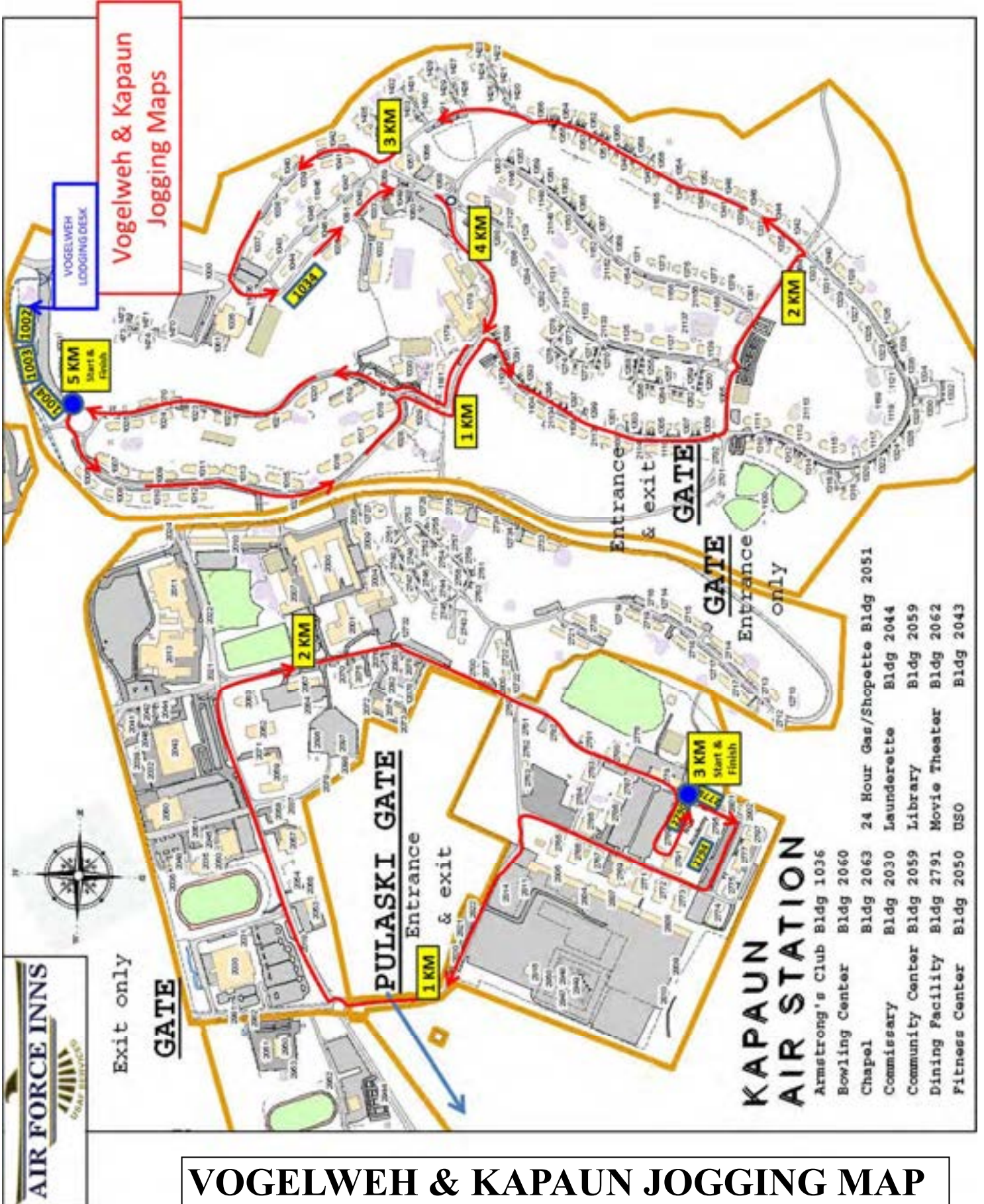
RAMSTEIN RUNNING TRAILS MAP



RAMSTEIN AB RUNNING TRAIL

- Direction - Signs
- Half - Mile - Markers : Air Force Trail
- Half - Mile - Markers : Hercules Trail
- "You Are Here" - Signs
- Hercules Trail - 6.23 Miles
- Air Force Trail - 7.31 Miles
- Rail To Trails - 1.5 Miles
(4 Lengths = 1.5 Miles)





VOGELWEH & KAPAUN JOGGING MAP

Local Area Attractions

KAISERSLAUTERN POINTS OF INTEREST

Situated in the midst of the Rheinland-Pfalz region, Kaiserslautern is an international city with more than 100,000 inhabitants. The city has preserved its historical past despite its growth into one of the largest industrial and marketing cities in Germany. Nicknamed K-town by Americans, Kaiserslautern is home to the largest community of Americans in Europe.

CASTLES

Nanstein Castle. Location: Am Nanstein, 66849 Landstuhl

The landmark of the Sickingen town of Landstuhl is Nanstein Castle. It was erected in 1150 A.D. by Emperor Friedrich Barbarossa (Friedrich I) above a 15 meter high sandstone ledge. The castle was part of a



fortification system of the Hohenstaufen Dynasty in the Palatinate. It is the place where Franz von Sickingen, one of the last knights, died in 1523 A.D. during the battle for the castle. The castle contains building materials from five centuries. In summer it serves as the stage for performances of the Landstuhl Castle Plays.

←————— **Bismarckturm.** Location: Luitpoldstrasse, 66849 Landstuhl

This striking view point, built in 1900 on the front knoll of the 371 m high Kirchberg hill, offers a superb view over Landstuhl, town of the Sickingens and the varied landscape of the region.

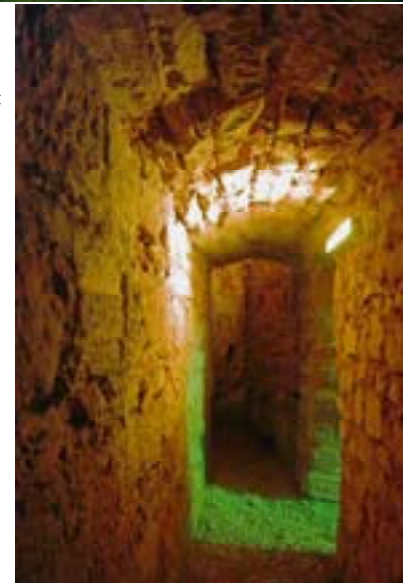
—————→ **Frankenstein Castle Ruins:**

Location: Hauptstrasse 241, 67468 Frankenstein

This Hohenstaufen castle was built in several phases in the 12th and 13th century. Together with the entry of the railroad tunnel and the Frankenstein church the castle ruin constitutes a romantic ensemble of red sandstone.



Imperial Palace and Casimir Castle. Location: Willy-Brandt-Platz 2, 67657 Kaiserslautern
Unfortunately both don't exist any longer - neither Barbarossa's Kaiserpfalz (Imperial Palace) nor the renaissance castle which the Count Palatine had built directly in his vicini-



ty. But the spectacular building hasn't fully disappeared. The ruins, which were given a roof and christened the "Pfalzgrafensaal" (Count Palatine Hall) in 1935 are well worth seeing, and in the former living room (or did he perhaps sleep here?) of the "hunter from the electoral Palatinate" today official receptions of the city are held. The Count Palatine Hall and the subterranean passages from the Hohenstaufen period can be seen on guided tours which last about 1 hour.

Local Area Attractions

SHOPPING

Kaiserslautern serves as the shopping center for the Western Palatinate region. Those interested in shopping will find everything they need and more. Check out the “K in Lautern” mall in the center of Kaiserslautern, (GPS K in Lautern Round torch 1 67655 Kaiserslautern). More opportunities at the Merkurstrasse (KL-West), within the City Center at the Schillerplatz, the Fackelstrasse, the Marktstrasse, the Eisenbahnstrasse and many more other streets. During your shopping tour have a break at one of the sidewalk cafes, where you can enjoy time with your friends and the surroundings. Stroll along Stiftsplatz on Tuesdays and Saturdays for the local Farmer’s Market. The booths are filled with ripe fruit and vegetables, meat and cheese specialties as well as fresh flowers and local products like honey and spices.

MUSEUMS AND CULTURE

Palatinate Gallery of Art. Location: Museumplatz 1, 67657 Kaiserslautern

The Gallery was built between 1875 and 1880 from plans by Karl Spatz in neo-renaissance style. The reconstructed permanent exhibition halls now house an excellent collection of paintings and sculptures as well as exquisite pieces of artwork. (In German it is called Pfalzgalerie)



Haus des Bürgers. Location: Am Neuen Markt 4, 66877 Ramstein



Ramstein’s cultural and conference center is host to numerous national and international stars every year. The varied stage programs include musicals, concerts, shows, plays and programs for kids. The facility has a seating capacity for up to 800 people and was completed in 1986. It is also suitable for conferences, meetings, exhibitions and parties. The “Haus des Bürgers“ has a restaurant, a bowling alley, meeting facilities for senior citizens and classrooms for the community’s adult education center which offers a wide variety of subjects. “Haus des Bürgers” also accommodates the American housing office,

the youth center of the union community of Ramstein-Miesenbach and the German post office. The public library, providing a comprehensive collection of current media, is also located in the building.

Museum Winnweiler - Jewish Museum of the North Palatinate.

Location: Schlosstrasse 37, 67722 Winnweiler. The museum shows the turbulent and moving Jewish history of the North Palatinate. The exhibition focuses on historical development of Judaism in the North Palatinate from the Roman period until the Second World War. Furthermore the focus is on aspects of Jewish faith and Jewish life.



Palatinate Theater. Location: Willy-Brandt-Platz 4-5, 67657 Kaiserslautern. In the immediate neighborhood of the steel and concrete architecture of the city hall is the imposing sandstone structure of the Palatinate Theater, flanked by two masks in Carrara marble. Whether it's a classic play, an opera or a ballet, the Pfalztheater, as it is called in German, is a curtain call for big and small lovers of musical theater. It is the second biggest theater in the state of Rheinland-Palatinate and the only one with a full-time cast of professional entertainers and musicians. Also visit the cultural centers Kammgarn and the Cotton Club for live concerts of international rock, pop and jazz performers.

Local Area Attractions

PARKS AND ZOOS

Kaiserslautern Zoo. Location: Zum Tierpark 10, 67661 Kaiserslautern. The zoo is a popular destination in the western outskirts of the city of Kaiserslautern. The zoo houses over 100 animal species and 500 wild and domestic animals on an area of approximately 17 acres. The zoo features zebras, a tropical world, a falconry exhibit, petting zoo, aquariums and more.



Garden Show. Location: Lauterstrasse 51, 67659 Kaiserslautern. Something is blooming here for you...on the formerly unused grounds of the Worsted yarn spinnery and the slaughter house; in 2000 the first Rhineland-Palatine state garden show grew with its "Gardens of Diversity". Since then, the garden show enthuses thousands of visitors every year from April to October with its flora, numerous events, cultural offerings, sports opportunities, free time activities, and unmistakable highlights like the largest dinosaur exhibit in Europe.



Celtic Garden & Celtic Village at the Donnersberg. Location: Bruehlstrasse, 67808 Steinbach. A stroll through the Celtic Garden shall acquaint the visitor in an illustrative way with the life, the working world, the culture as well as the natural environment at the time of the Celts 2000 years ago. Information boards display details about specific features of the flora and fauna at the Donnersberg Mountain. Furthermore the boards describe Celtic customs, lifestyle habits, beliefs and technical



achievements. For children, you are close to nature play areas and lots of space to romp around.



AZUR Water World. Location: Schernauer Strasse 50, 66877 Ramstein. The AZUR Water World is a family-friendly indoor and outdoor pool providing year-round recreation for people of all ages. The indoor area is equipped with a 25 meter long swimmer's pool, a non-swimmers pool with massage jets and waterfall shower, a giant slide and an ample area for kids. You will also find a water playground, jacuzzi, steam bath, a sauna area offering scented steam treatments and a restaurant. Outdoors, you will find a large 50 meter pool with diving platforms, a giant slide as well as a baby and kids pool. The heated outdoor basin can be used in the winter months as well.

Local Area Attractions

OUTDOORS ACTIVITIES

Naturerlebnisbad: Location Kaiserstrasse 126, 66849 Landstuhl.

This outdoor pool paradise for big and small, young and old is a relaxing oasis equipped with natural spring water and surrounded by reeds. Nearby you will find CUBO, offering myriad sauna, relaxation, & wellness programs.



Pfälzer Waldpfad (Palatinate Forest Trail) Location: Starting point is at the Kaiserslautern Hauptbahnhof (main train station). Spectacular rocks, deep cut valleys and, above all, forest as far as the eye can see! This is what you can expect along the Pfälzer Waldpfad (Palatinate Forest Trail) which is with its 140 kilometers (87 miles) length, the only long-distance walking trail in Germany that starts at an ICE train station and crosses the French border.



Pfälzer Höhenweg (Palatinate High Route - Hiking Trail): Multiple starting spots leading along Winnweiler, Dannenfels, Donnersberg, Rockenhausen, Obermoschel, Meisenheim, Lauterecken and Wolfsteinone. The “Höhenweg“ (high route) with a length of 112 km (70 miles) leads through the Donnersberg Mountain region and invites you to a special hiking experience. The route passes historical castles, small towns and woods. Although the certified hiking trail leads you to the highest elevation in the Palatinate, it can easily be managed, since there are plenty of possibilities to take a rest.

Red Devils Soccer - Fritz Walter Stadium: Location Fritz Walter Strasse 1, 67663 Kaiserslautern. Kaiserslautern residents avidly support their soccer team, the 1st FCK (Erste Fussball Club Kaiserslautern or Red Devils), through good seasons and bad. The Red Devils compete on national level with teams from other major German cities. Kaiserslautern expanded the Fritz Walter Stadium for the 2006 Soccer World Cup. Named for the city’s most famous soccer player, it now seats 48,500 spectators.

There is a great deal more to see and do in this region than could possibly be listed here. Please visit The Ramstein Gateway Kiosk - just one floor up from the Ramstein lodging Reception Desk or go to <https://www.ramstein-gateway.com> for additional information and brochures.



**AFN EUROPE
RADIO
FREQUENCIES**

<u>Germany</u>	<u>Frequency</u>
Amberg	89.9
Ansbach	107.3
Baumholder	106.1
Garmisch	90.3
Geilenkirchen	96.9 / 99.7
Grafenwoehr	98.5
Hohenfels	93.5
Illesheim	104.9
Kaiserslautern	105.1
Spangdahlem	105.1
Stuttgart	102.3
Vilseck	107.7
Wiesbaden	103.7

<u>Belgium</u>	<u>Frequency</u>
Brussels	101.7
Chievres	107.9
Kleine Brogel 1	106.2
SHAPE	106.5

<u>The Netherlands</u>	<u>Frequency</u>
Brunssum	96.9 / 99.7
Schinnen	96.9 / 99.7
Volkel	107.9

<u>Italy</u>	<u>Frequency</u>
Aviano	106.0
Naples	107.0
Sigonella	105.9
Vicenza	106.0

<u>Spain</u>	<u>Frequency</u>
Rota	102.5
Moron	92.1

AIR FORCE INNS

TV Channel Listing

No.	Channel Name	Category	Language
2	AFN News	News	English
3	CNN International	News	English
4	America One HD	News	English
5	AFN Family	Family	English
6	AFN Prime Atlantic	Entertainment*	English
7	AFN Prime Pacific	Entertainment*	English
8	AFN Spectrum	Family	English
9	AFN Sports 2	Sports	English
10	Qubo	Family	English
11	Disney Junior	Family	English
12	Disney XD	Family	English
13	Great American Country	Family	English
14	National Geographic HD	Family	English
15	ION Television	Family	English
16	Starz Kids Family HD	Family	English
17	Church Channel	Family	English
18	HGTV	Family	English
19	Travel Channel	Family	English
20	ABC HD	Entertainment*	English
21	CBS HD	Entertainment*	English
22	NBC HD	Entertainment*	English
23	AFN Movie	Movies*	English
24	Encore HD	Movies*	English
25	get TV	Entertainment*	English
26	Starz HD	Movies*	English
27	AFN Sports HD	Sports	English
28	Big Ten Network HD	Sports	English
29	CBS Sports	Sports	English
30	Fox Sports	Sports	English
31	Stadium	Sports	English
32	MLB HD	Sports	English
33	NFL Network HD	Sports	English
34	NHL HD	Sports	English
35	Das Erste	Entertainment*	German
36	ProSieben	Entertainment*	German
37	RTL Television	Entertainment*	German
38	Sat 1	Entertainment*	German
39	ZDF HD	Entertainment*	German
40	History on Espanol	Family	Spanish
41	Telemundo	Entertainment*	Spanish
42	Univision	Entertainment*	Spanish

*NOTE: Some material may not be appropriate for children.

August 2021

Subject to change without notice.

Transportation

Local Transportation:

Military (Official Business On-Base Only)	480-5961
AMC Passenger Terminal, Ramstein.....	479-4441
AMC Passenger Terminal, Spangdahlem	452-8866
Alex Airport Shuttle (AAS)	06371-43068
Taxi—Service Bay	06372-1600
Taxi & Airport Shuttle	0172-680-0432
Yellow Cab Ramstein	0176-649-98292
Taxi or Airport Shuttle Dellwing.....	0178-29-89073
Taxi-Service Ramstein	06371-50510
Rita’s Airport Shuttle.....	0171-283-1667 or 06371-58626
Bus (www.swk-kl.de/en.html).....	0631-8001-5000
Train (automated, just hold-on the line for help is in English).....	0180-699-6633
Frankfurt Airport	0180-6372-4636
Hahn Airport	06543-509113
Luxemburg Airport.....	(00352)-24640



Car Rental Agencies :



Hertz (Building 412).....	06371-44202
Enterprise Car Rental (KMCC Mall).....	06371-613840
Buchbinder Rent-a-Car	0631-99999
SIXT Rent-a-Car KMCC MALL.....	06371-43978
Europcar (Landstuhl & K-town).....	06371-71008
AVIS/Budget (Ramstein Miesenbach).....	06371-952555

Bicycle, Boat and Camper Rental:

Outdoor Recreation carries supplies for camping, boating, surfing, outdoor sports and much more. We have it all, from mountain bikes to BBQ grills, from wetsuits to lawnmowers, even campers. Most items can be checked out for a day, a weekend, or an entire week! Contact Outdoor Recreation at 480-5705, or come see us in the KMCC Mall, or check us out online at www.86FSS.com





Thank you for staying with us!

The appearance of local business names, addresses, and phone numbers in this publication does not constitute endorsement by the Department of Defense or the Department of the Air Force. All hours of operation and telephone numbers are subject to change.